

AJIA GLOVER

TOTAL FINISHED AREA: 609 SQ.FT.

Royal LePage West Real Estate Services

Cell: 604-315-8586

Office: 604-581-3838

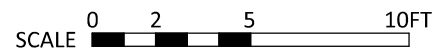
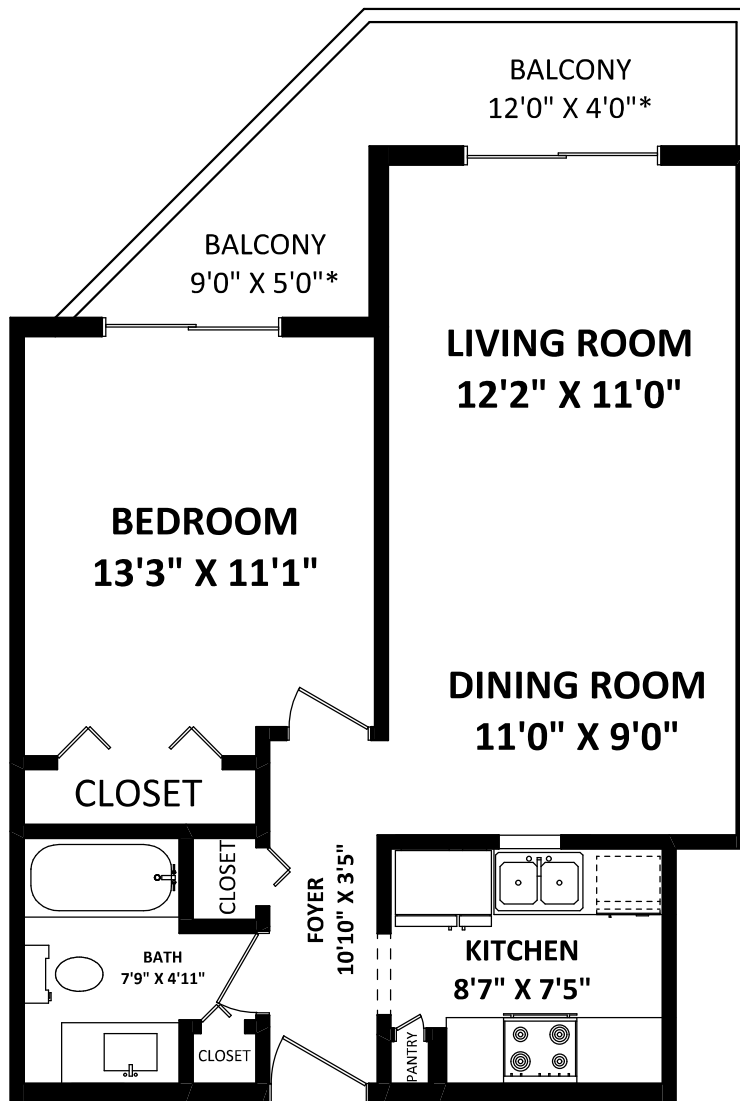
ajia@ajiatherealtor.com

www.ajiatherealtor.com

OTHER AREA(S)

BALCONIES:

100 SQ.FT.*



DISCLAIMERS:

1. MEASUREMENTS ARE FOR PROMOTIONAL USE ONLY & ARE NOT INTENDED FOR CONSTRUCTION USE. ROOM DIMENSIONS ARE APPROXIMATE. MEASUREMENTS & CALCULATIONS FOR FINISHED AREAS ARE E&O INSURED.
 2. FINISHED AREAS ARE ENCLOSED AREAS IN A HOUSE THAT ARE SUITABLE FOR YEAR-ROUND USE, EMBODYING WALLS, FLOORS, AND CEILINGS THAT ARE SIMILAR TO THE REST OF THE HOUSE. (ANSI Z765-2013)
 3. FOR STRATA LOTS, SQUARE FOOTAGE OF EACH LEVEL IS CALCULATED FROM THE CENTERLINE OF THE EXTERIOR WALLS OR SHARED WALLS OF THE STRATA LOT TO THE CENTERLINE OF THE EXTERIOR WALLS OR SHARED WALLS OF THE ADJACENT STRATA LOTS. (REF. STRATA PROPERTY ACT, SECTION 68)
 4. THIS FLOOR PLAN MAY ONLY BE REPRODUCED WITH PERMISSION OF THE REALTOR(S) ON THIS FLOOR PLAN.
- * ANY MEASUREMENTS WITH AN ASTERISK (*) OR (APPROX) ARE APPROXIMATE AND FOR ILLUSTRATION PURPOSES ONLY AND ARE NOT E&O INSURED.

[MAY 11, 2022]



TEL: 604-575-1244
www.seevirtual360.com

